

LEARNING

LANDSCAPES

*Neue Schulbauformen,
neue Forderungen:
Die A. P. Møller Schule
in Schleswig*

Arkitektfirmaet C. F. Møller



REYKJAVIK

THE TEAM

300 IN TOTAL

9 Partners | 17 Branch Heads/Leaders | 164 Architects | 2 Industrial Designers | 6 Landscape Architects | 5 Engineers | 32 Constructing Architects | 26 Technical Illustrators/Assistants | 6 Consultants | 6 IT | 30 Administration, etc. | 11 Trainees

NATIONALITIES

18 COUNTRIES IN TOTAL

214 Danes | 41 Norwegians | 27 Swedes | 8 Germans | 4 British | 3 Americans | 3 Italians | 3 Poles | 2 Icelanders | 1 Canadian | 1 Chilean | 1 Finn | 1 Croat | 1 Syrian | 1 French | 1 Iraqi | 1 Russian | 1 Chinese

GENDER

46 % WOMEN • 54 % MEN

144 women | 170 men



KONTINUITÄT



Aarhus Universitæt

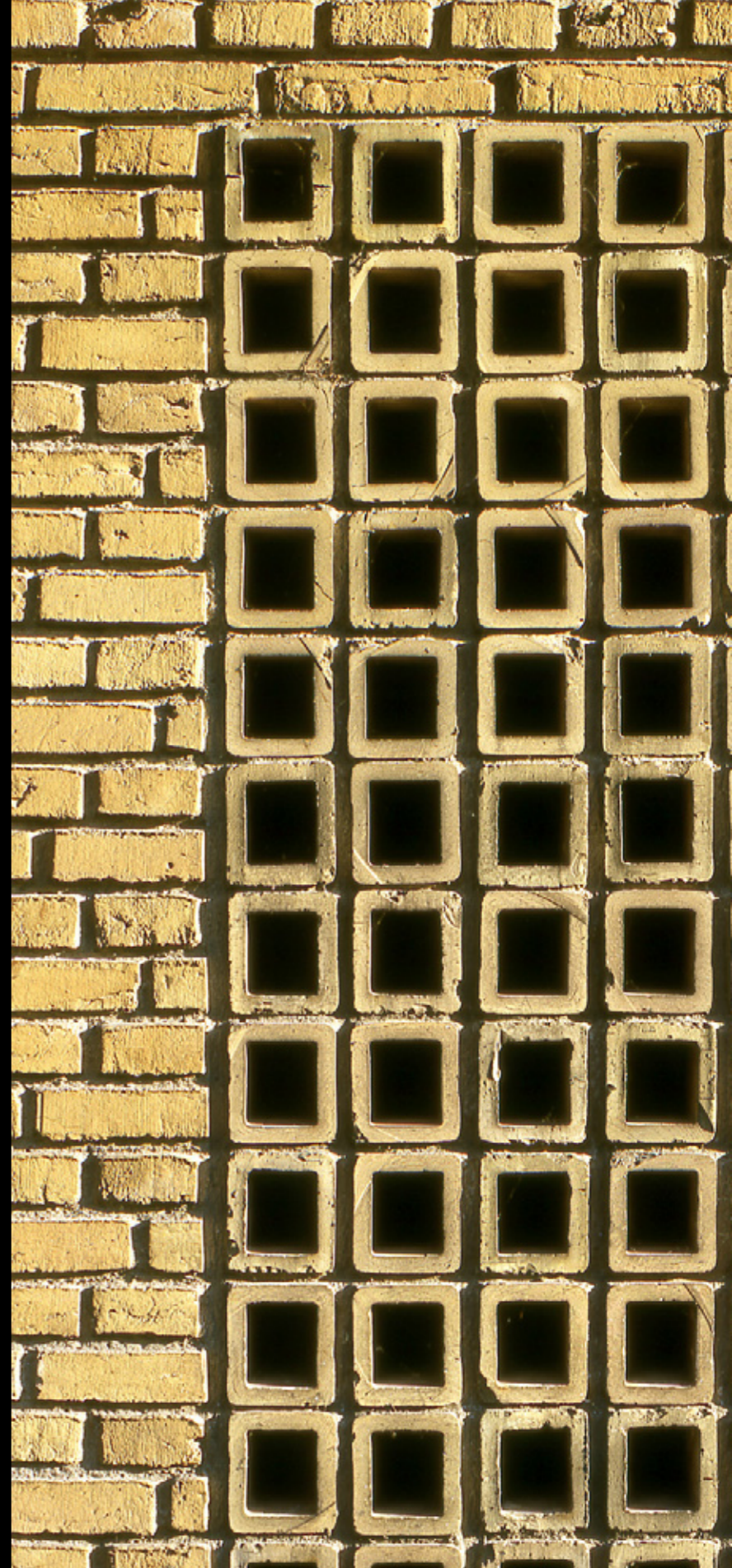




















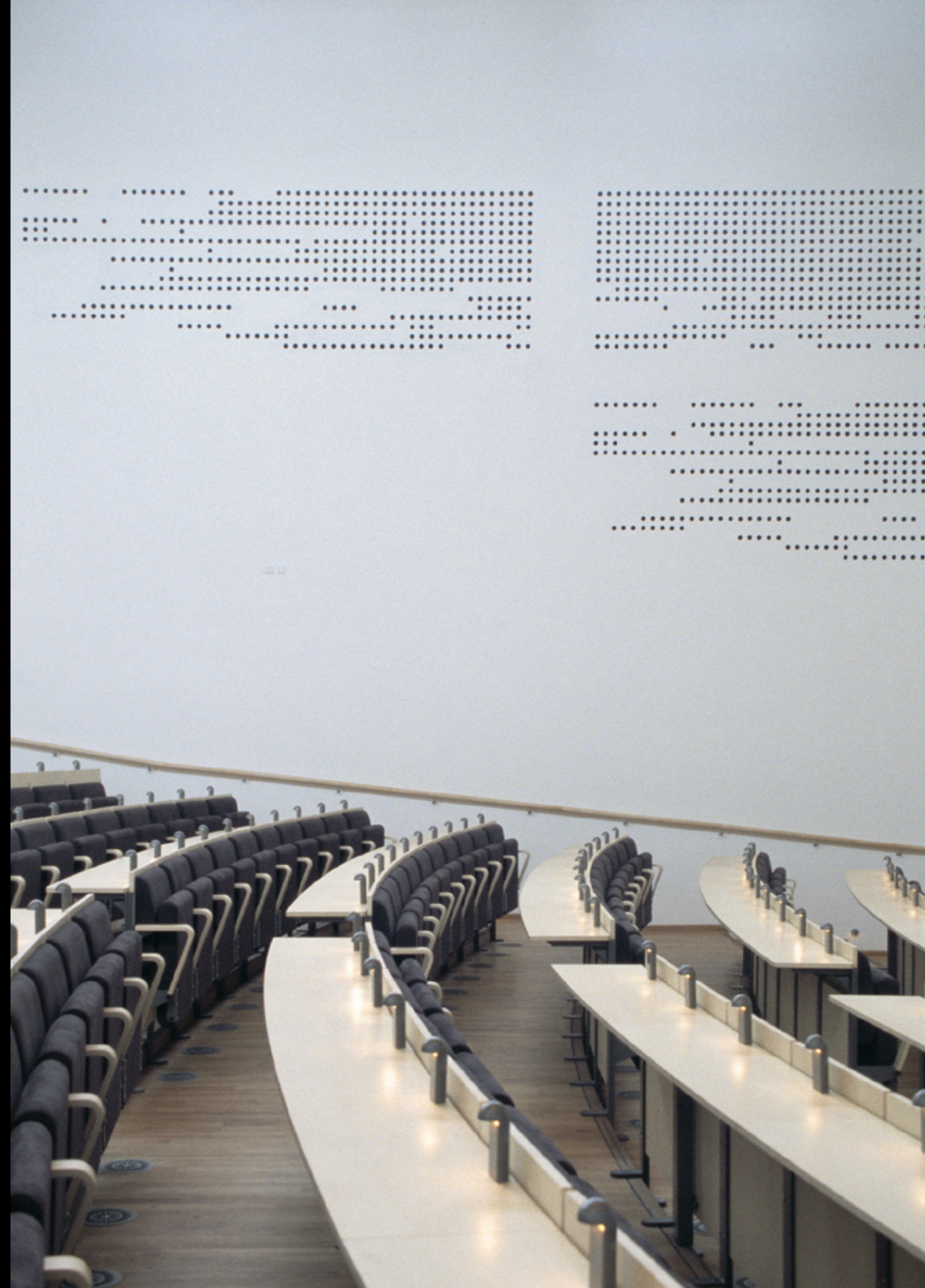


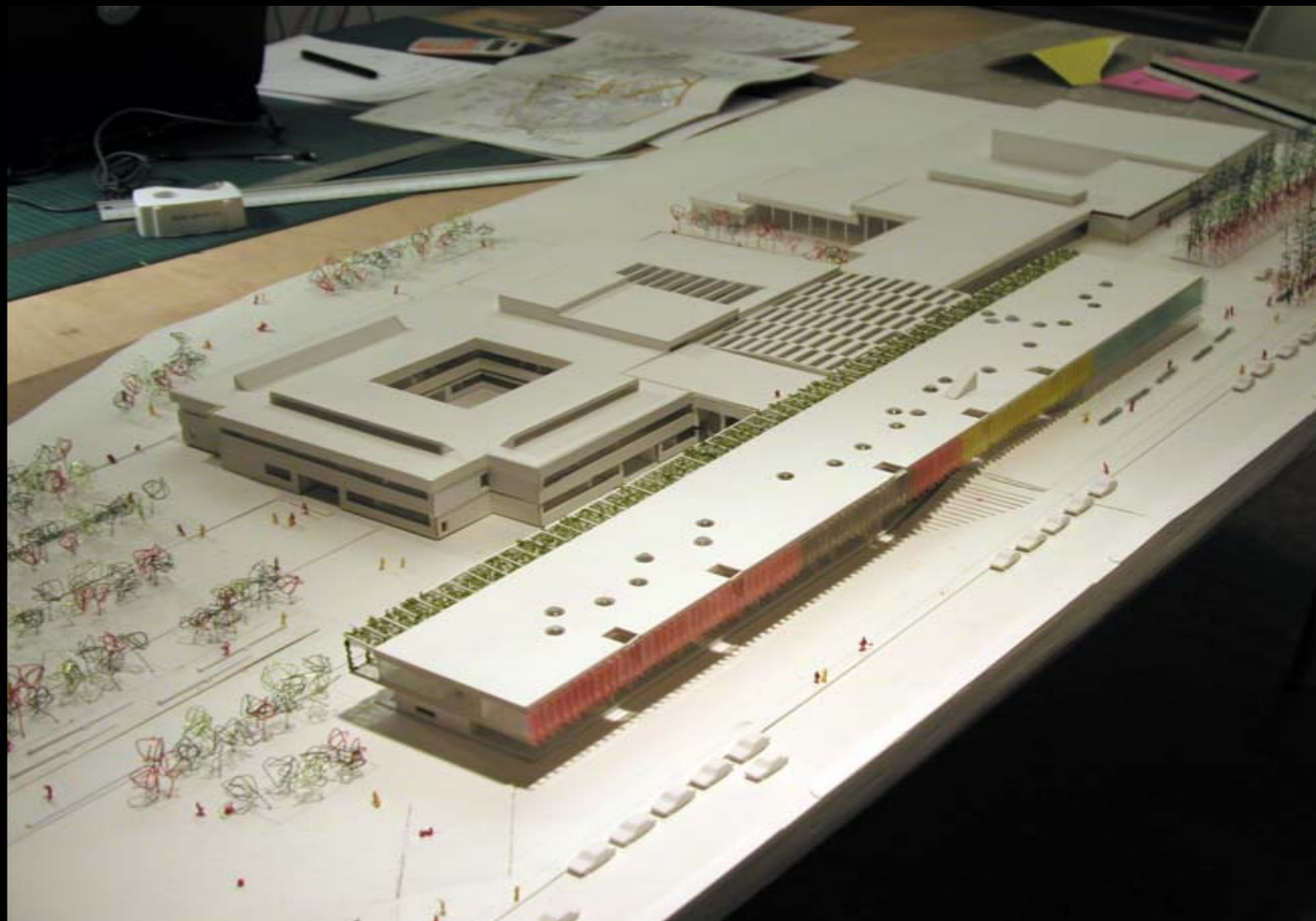




Undersøgelser
Håndspil
Forskningsrapport (Simple)









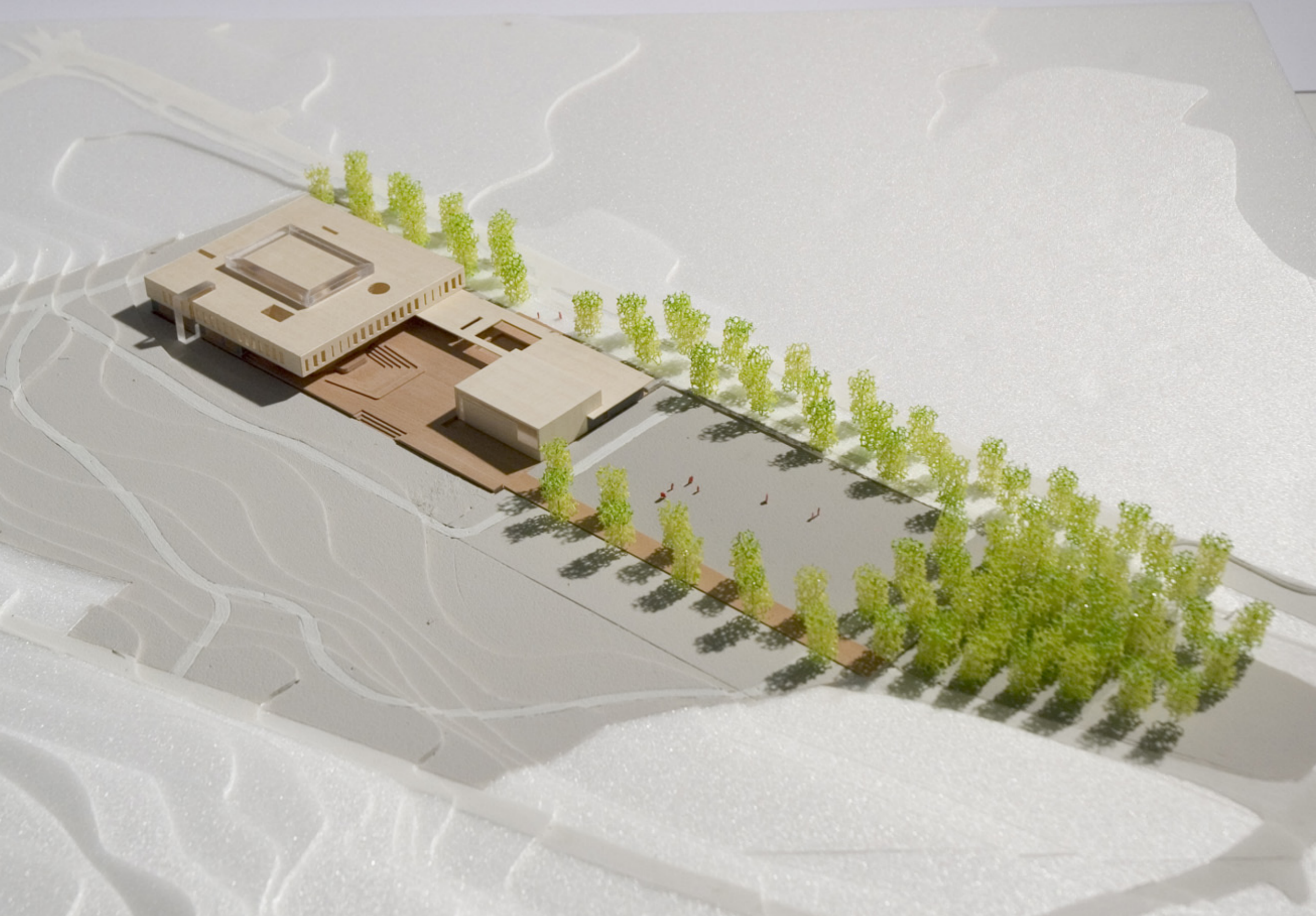






LERN- LANDSCHAFTEN

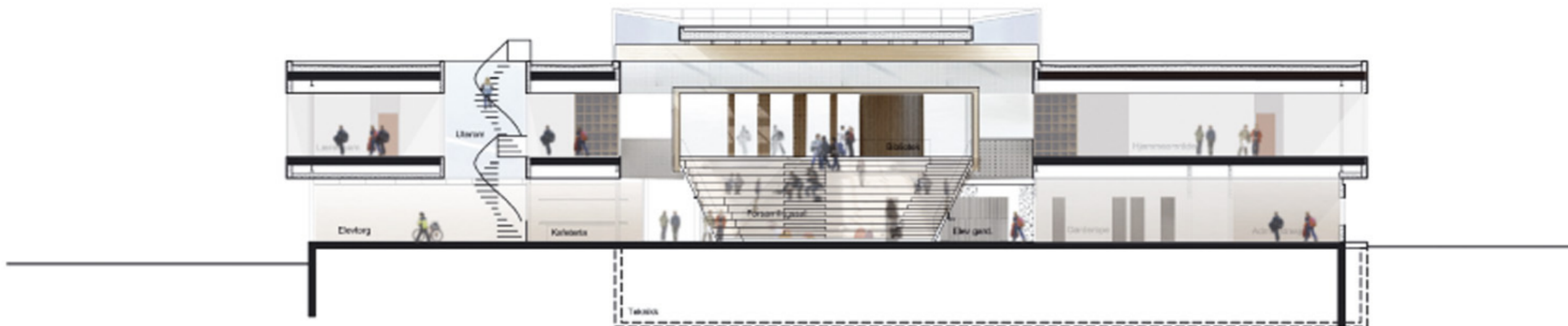
Vøyenenga Schule
A. P. Møller Schule







Snitt øst-vest sett mot sør









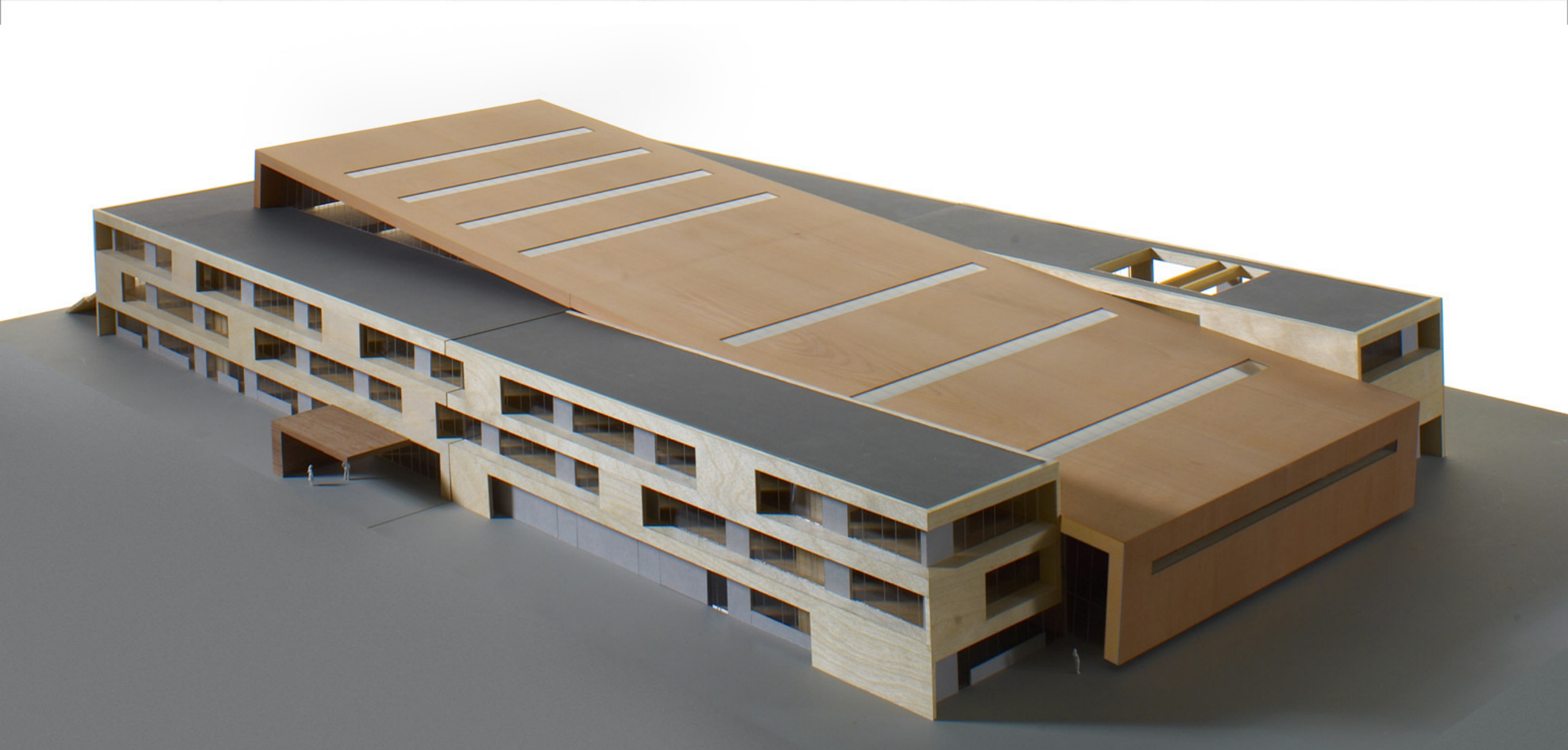




Forsamlingsaal m/scene - kantine
250 m²

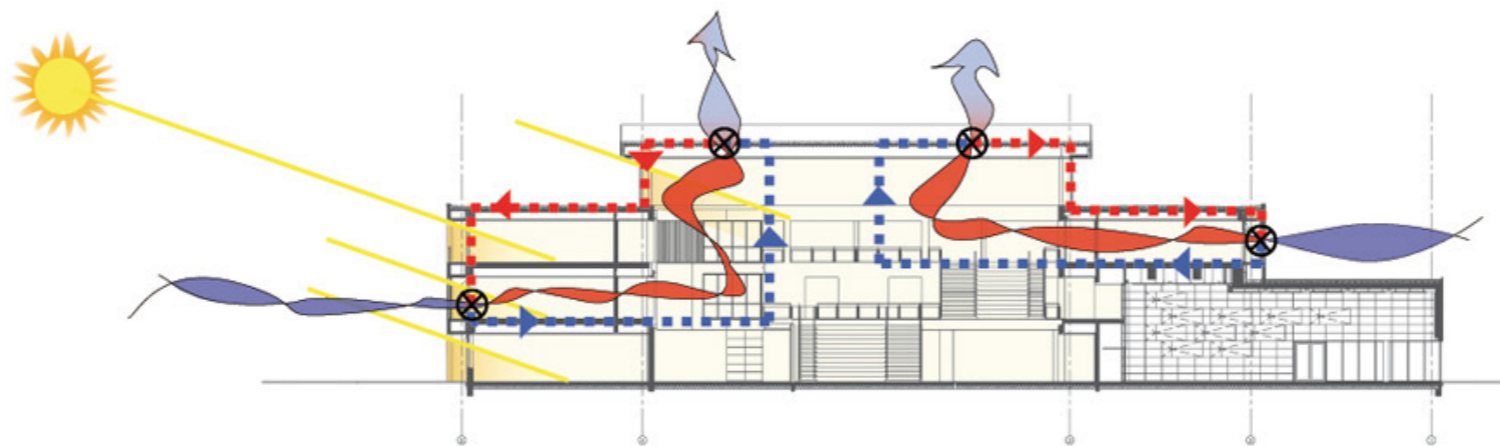
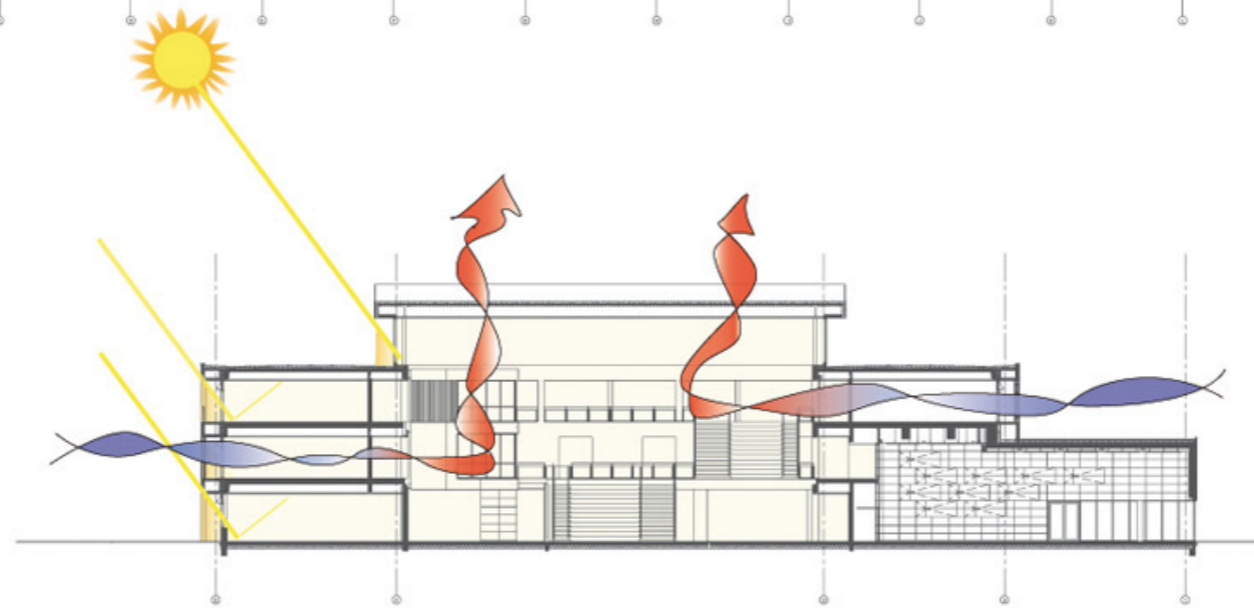
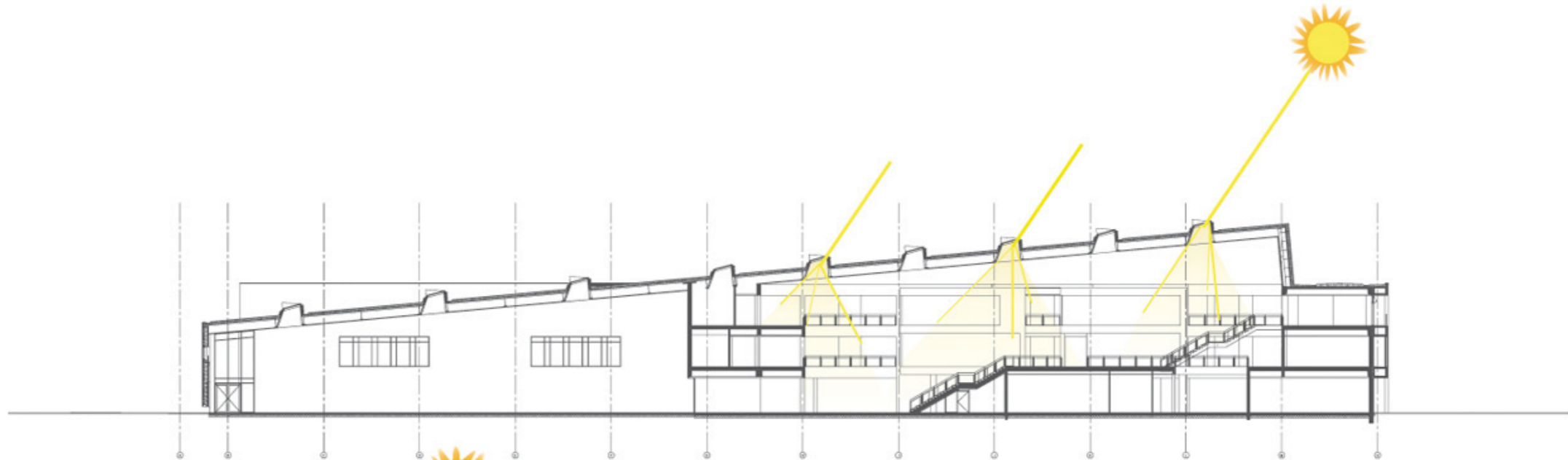








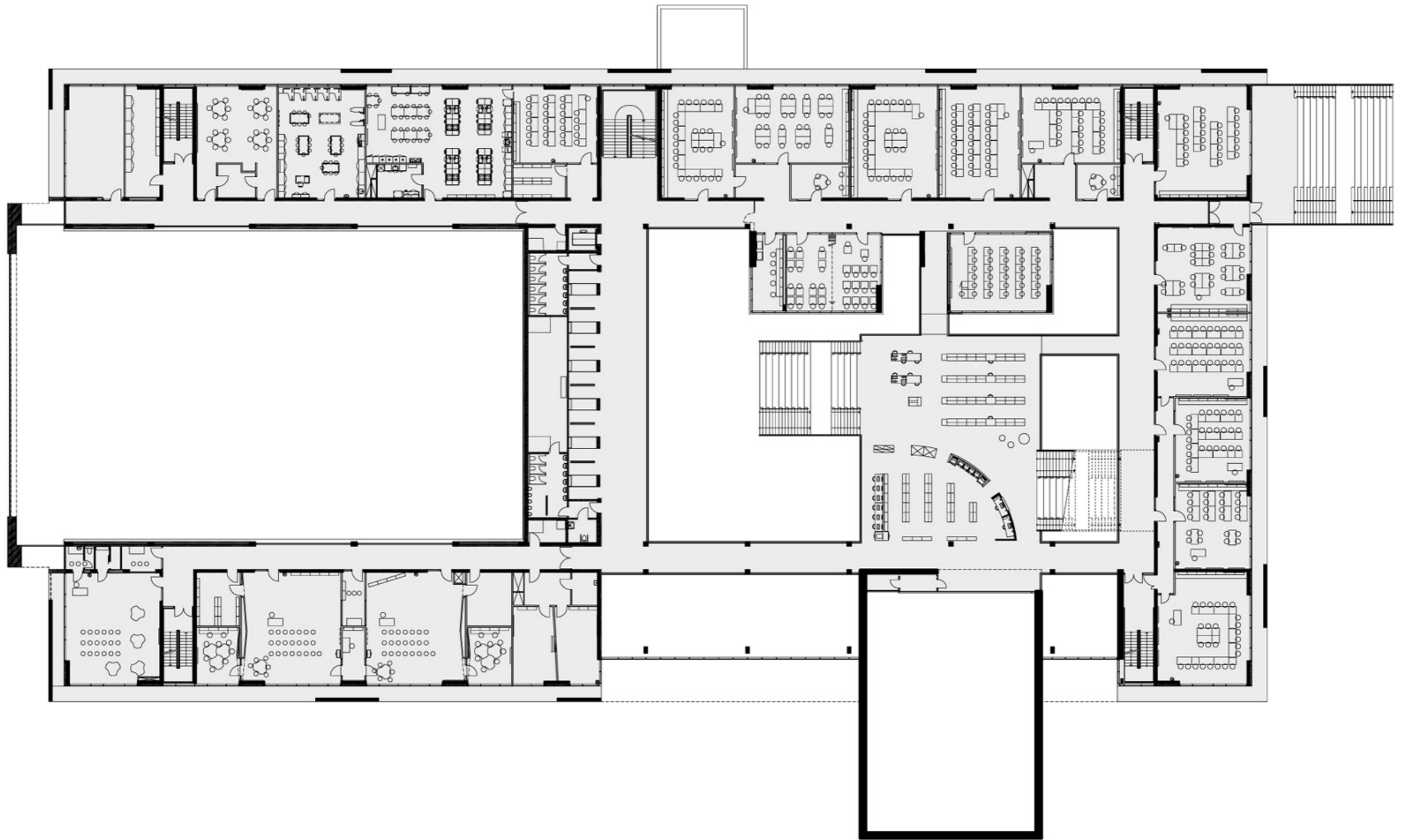


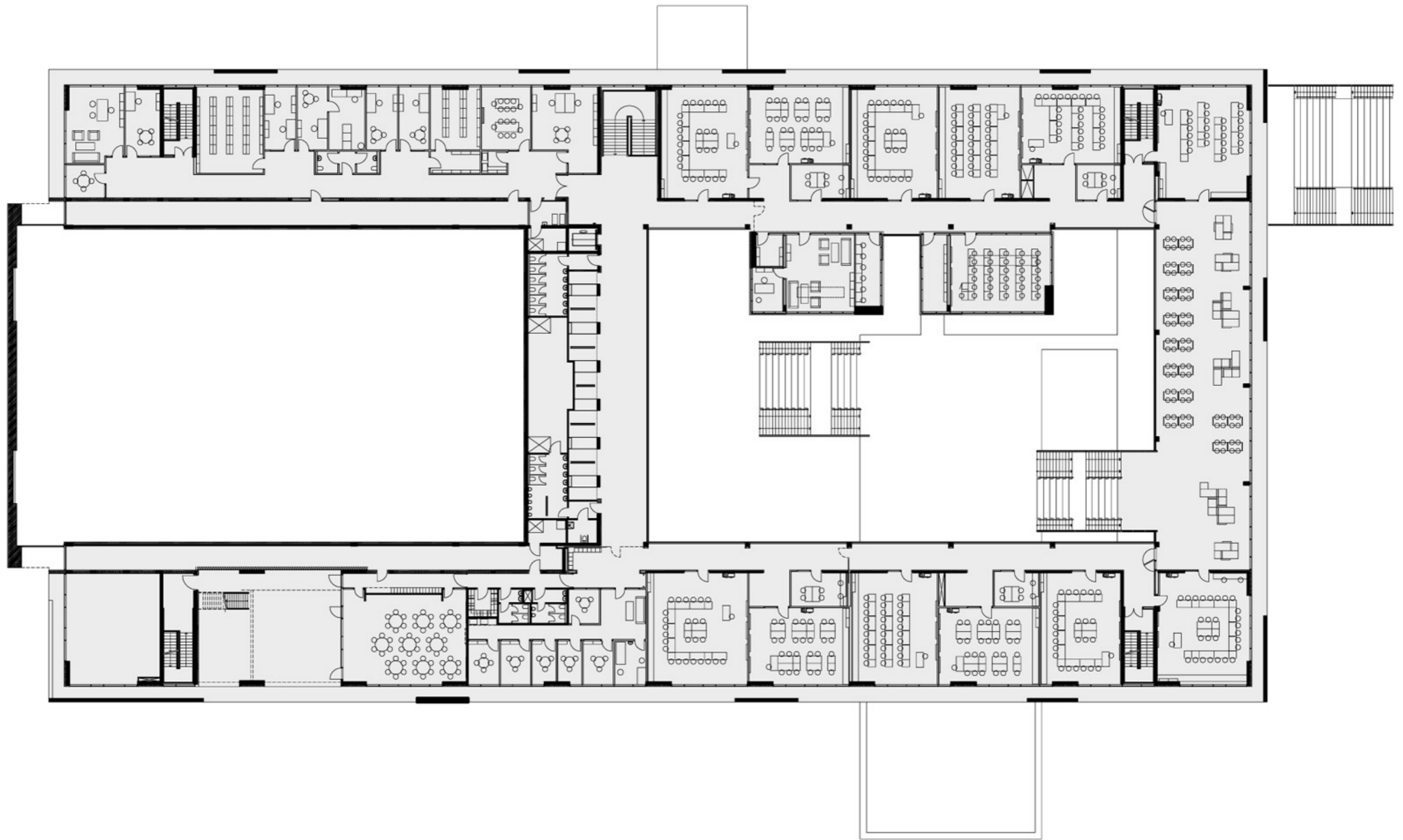


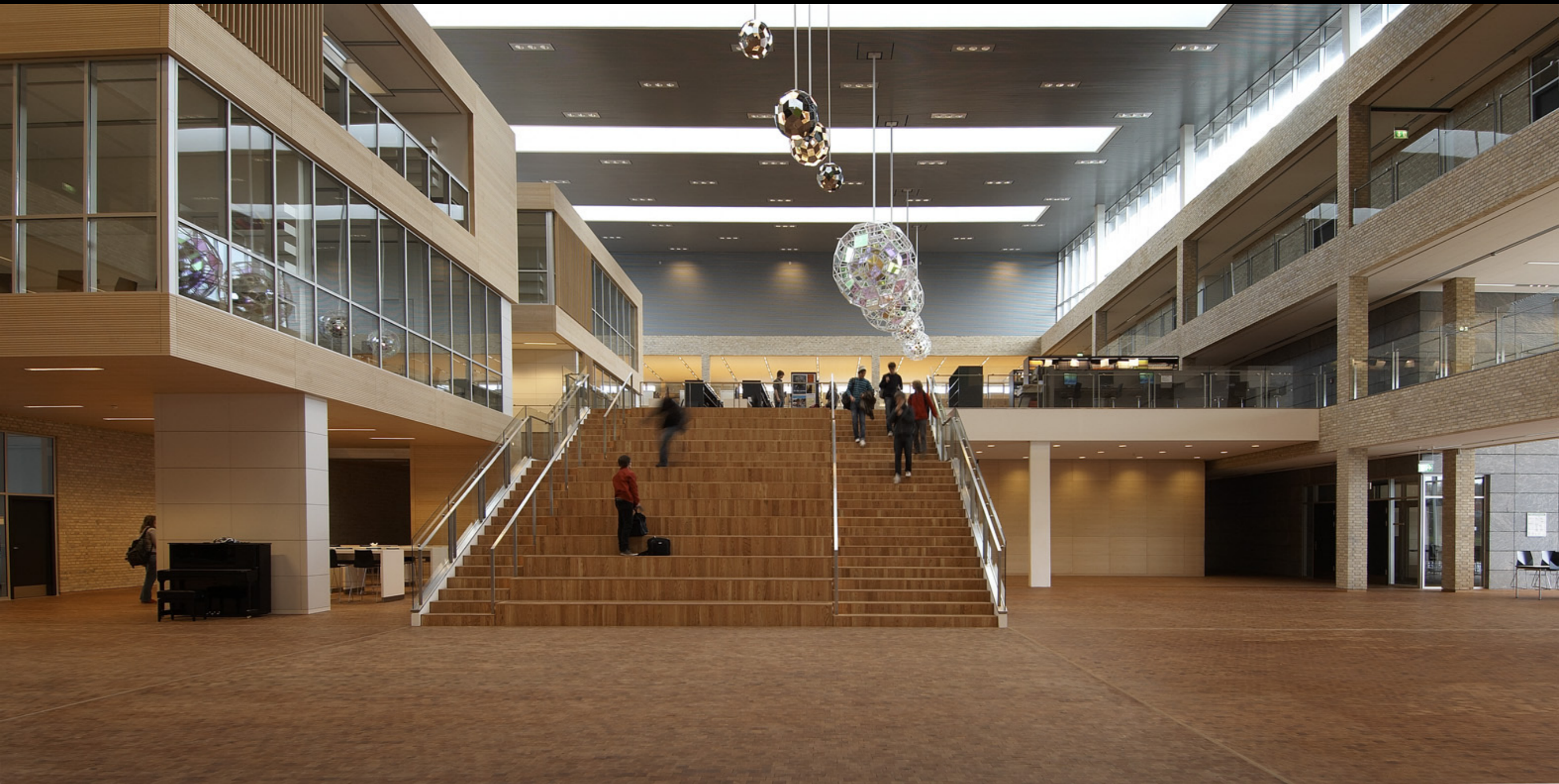


































071	072
	080
	088
5	096

136
144
152
160

200
208
216
224

















































